



## Support

[Support Overview](#)
[Care & Maintenance](#)
[Frequently Asked Questions](#)
[Links To Government Resources & Other Info](#)
[Serial Numbers & Markings Explained](#)
[Technical Bulletins](#)
[Request Additional Help](#)
[Limited Warranty](#)

# Serial Numbers & Markings

## NORTH AMERICA

	MARK	EXPLANATION
1st Row	TC or CTC	Transport Canada
	3ALM	Aluminum specification (Canada)
	124	Service pressure (bar)
	T11.3KG	Tare weight (Kilograms)

	MARK	EXPLANATION
2nd Row	DOT	US Department of Transportation
	3AL	Aluminum specification (USA)
	1800	Service pressure (PSI)
	U372530	Serial number
	LUXFER or M####	Manufacturing plant identifier

	MARK	EXPLANATION
3rd Row	01	Month of manufacture
	A	Mark of independent inspector
	98	Year of manufacture



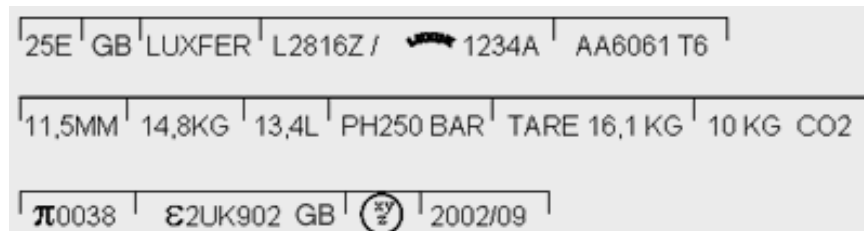
<b>20#C02</b>	C02 capacity
<b>TW24.9</b>	Tare weight (LBS)

Stamping layouts have changed slightly over the years. If in doubt, please **contact customer service**.

👉 [Top of Page](#)

## EUROPE

### Typical Markings for a Liquefied Gas Cylinder According to TPED



1. **25E** = Thread Specification - Important to ensure the correct valve is used with your cylinder.
2. **GB** = Country of Manufacture
3. **LUXFER** = Cylinder Manufacturer
4. **L2816Z** ....= Cylinder Type Number and Serial Number - This number is recorded by Luxfer which means, if ever necessary, the entire manufacturing history of your cylinder can be traced.
5. **AA6061 T6** = Alloy of Construction
6. **11,5MM** = Design Minimum Wall Thickness.
7. **14,8KG** = Empty Weight of Cylinder Only (kg)
8. **13,4L** = Minimum Water Capacity (litres)
9. **PH 250 BAR** = (Test Pressure) - Shows the pressure that the cylinder should be tested to - this must not be exceeded.
10. **TARE 16,1 KG** = Weight of cylinder plus valve plus any accessories fitted at time of filling such as collar and cage.
11. **10 KG CO2** = Charge Weight.
12. **p 0038** = The mark of Conformity and Notified Body reference number to the Transportable Pressure Equipment Directive 1999/36/EC.
13. **e2UK902 GB** = Pattern Approval number according to Directive 84/526. Replaced by EN1975 when this specification is design basis.
14. **[STAMP]** = Stamp of Notified Body.
15. **2002/09** = Year and Month of initial test.

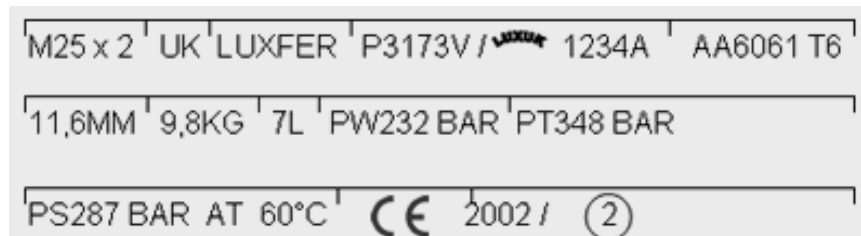
### Typical Markings for a CO2 Fire extinguisher Cylinder According to PED



1. **M25 x 2** = Thread Specification - Important to ensure the correct valve is used with your cylinder.
2. **UK** = Country of Manufacture
3. **LUXFER** = Cylinder Manufacturer
4. **L3158V**....= Cylinder Type Number and Serial Number - This number is recorded by Luxfer which means, if ever necessary, the entire manufacturing history of your cylinder can be traced.
5. **AA6061 T6** = Alloy of Construction
6. **4,4MM** = Design Minimum Wall Thickness.

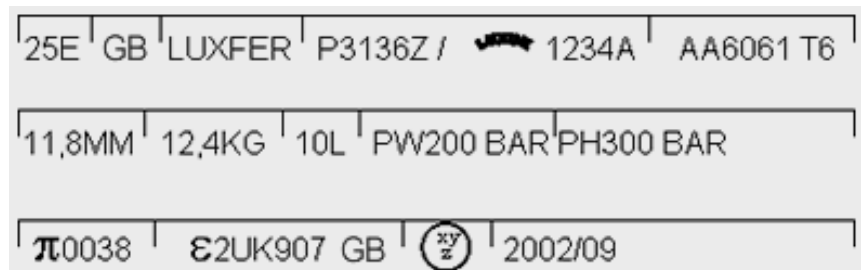
7. **2,4KG** = Empty Weight of Cylinder Only (kg)
8. **3L** = Minimum Water Capacity (litres)
9. **PT 212 BAR** = (Test Pressure) - Shows the pressure that the cylinder should be tested to - this must not be exceeded.
10. **2 KG CO2** = Charge Weight
11. **PS 169,3 BAR AT 60°C** = (Service Pressure) - Shows the maximum service pressure and operating temperature for which the cylinder design is approved.
12. **TARE 2,9 KG** = Weight of Cylinder plus valve and, if fitted, dip tube.
13. **GROSS 5,9 KG** = Tare Weight plus Charge Weight. (Optional)
12. **CE** - Is the mark of Conformity and Notified Body Reference Number according to the Pressure Equipment Directive 97/23/EC.
13. **2002/10** = (Test Date) - Year and Month of initial test.

### Typical Markings for a SCUBA Cylinder According to PED



1. **M25 x 2** = Thread Specification - Important to ensure the correct valve is used with your cylinder.
2. **UK** = Country of Manufacture
3. **LUXFER** = Cylinder Manufacturer
4. **P3173V....**= Cylinder Type Number and Serial Number - This number is recorded by Luxfer which means, if ever necessary, the entire manufacturing history of your cylinder can be traced.
5. **AA6061 T6** = Alloy of Construction
6. **11,6MM** = Design Minimum Wall Thickness.
7. **9,8KG** = Empty Weight of Cylinder Only (kg)
8. **7L** = Minimum Water Capacity (litres)
9. **PW 232 BAR** = (Working Pressure) - Shows the pressure that the cylinder should be filled to - this must not be exceeded.
10. **PT 348 BAR** = (Test Pressure) - Shows the pressure that the cylinder should be tested to - this must not be exceeded.
11. **PS 287 BAR AT 60°C** = (Service Pressure) - Shows the maximum service pressure and operating temperature for which the cylinder design is approved. This must not be confused with the working pressure (9).
12. **CE** - Is the mark of Conformity and Notified Body Reference Number according to the Pressure Equipment Directive 97/23/EC.
13. **2002/ 2** = (Test Date) - Year and Quarter of year of initial test.

### Typical Markings for a Permanent Gas Cylinder According to TPED



1. **25E** = Thread Specification - Important to ensure the correct valve is used with your cylinder.
2. **GB** = Country of Manufacture
3. **LUXFER** = Cylinder Manufacturer
4. **P3136Z ....**= Cylinder Type Number and Serial Number - This number is recorded by Luxfer which means, if ever necessary, the entire manufacturing history of your cylinder can be traced.
5. **AA6061 T6** = Alloy of Construction
6. **11,8MM** = Design Minimum Wall Thickness.
7. **12,4KG** = Empty Weight of Cylinder Only (kg)
8. **10L** = Minimum Water Capacity (litres)
9. **PW200 BAR** = (Working Pressure) - Shows the pressure that the cylinder should be filled to - this must not be exceeded.
10. **PH300 BAR** = (Test Pressure) - Shows the pressure that the cylinder should be tested to - this must not be

exceeded.

11. **p 0038** = The mark of Conformity and Notified Body reference number to the Transportable Pressure Equipment Directive 1999/36/EC.

12. **e2UK907 GB** = Pattern Approval number according to Directive 84/526. Replaced by EN1975 when this specification is design basis.

13. **[STAMP]** = Stamp of Notified Body.

14. **2002/09** = Year and Month of initial test.

 [Top of Page](#)

[Home](#) | [About](#) | [News](#) | [Products](#) | [How To Buy](#) | [Support](#) | [Downloads](#) | [Contact](#) | [Search](#)

**Setting the Standard Worldwide**

Copyright 2002 Luxfer Gas Cylinders  
A MEMBER OF THE **LUXFER GROUP OF COMPANIES**